



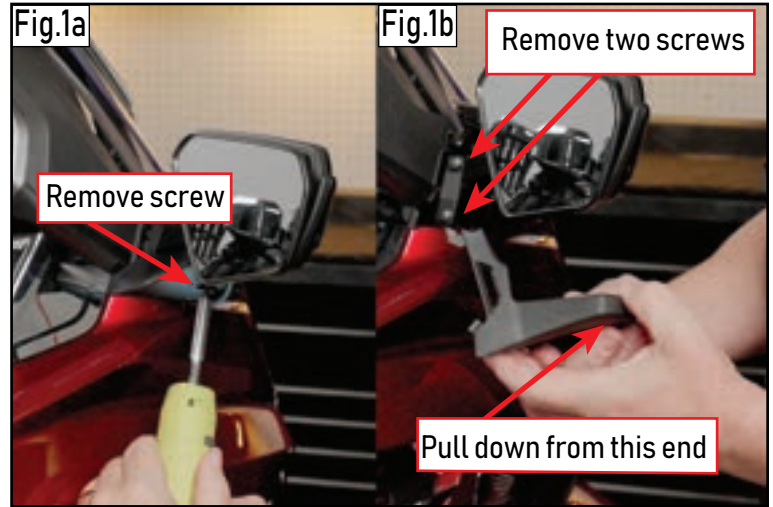
PANOVISTA™ LED LIGHTED EXTENDED CONVEX MIRRORS

- WARNING** This indication alerts you to the fact that ignoring the contents described herein can result in potential serious injury or death if not followed.
- CAUTION** This indication alerts you to the fact that ignoring the contents described herein can or will result in material damage and/or personal injury.
- ATTENTION** This indication alerts you to the fact if you ignore this detail you will affect the performance or functionality of the product.

All Giro products are designed for "easy assembly" and/or "plug and play". We recommend a competent mechanic install our products, using standard mechanical procedures to assure a safe and successful installation. Read completely and understand the instructions prior to starting installation.

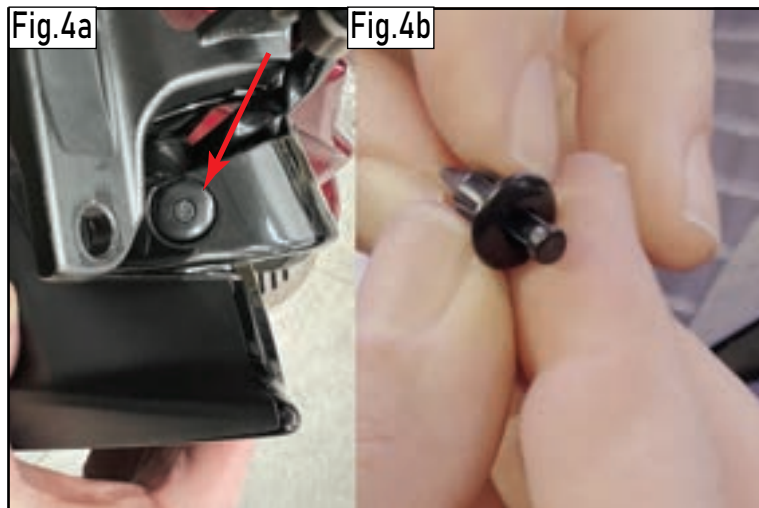
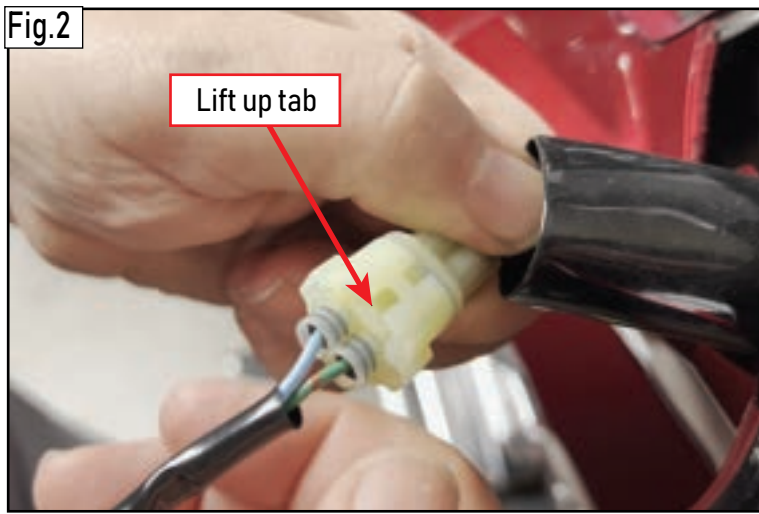
NOTE: Giro products are designed and manufactured under very strict quality control. Giro warrants that products sold to the original purchaser shall be free from any defects in materials and workmanship for a period of 3 (three) years from the date of purchase, and a limited lifetime warranty against LED failure. Giro will have no obligation if the customer cannot show proof of purchase. Warranty will not be granted unless the part is properly installed, unmodified and maintained. Giro will not be liable for any consequential and incidental damages, including labor, or non-Giro products. Please visit Ciro3d.com for our complete warranty policy.

Included Items:



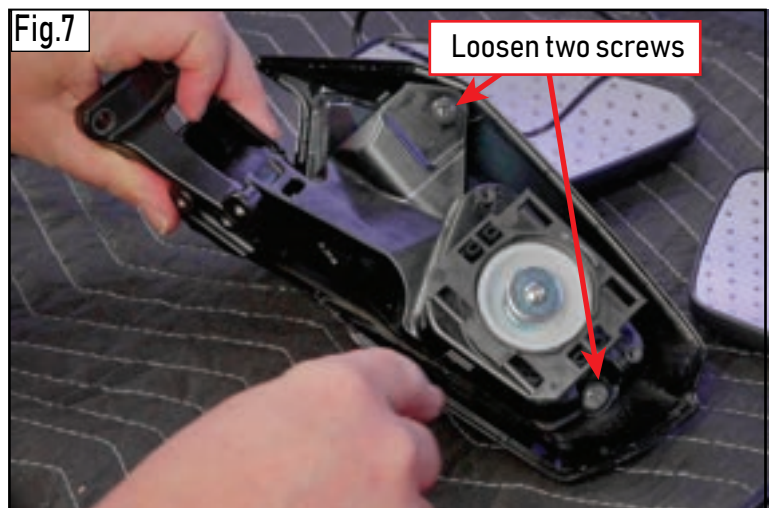
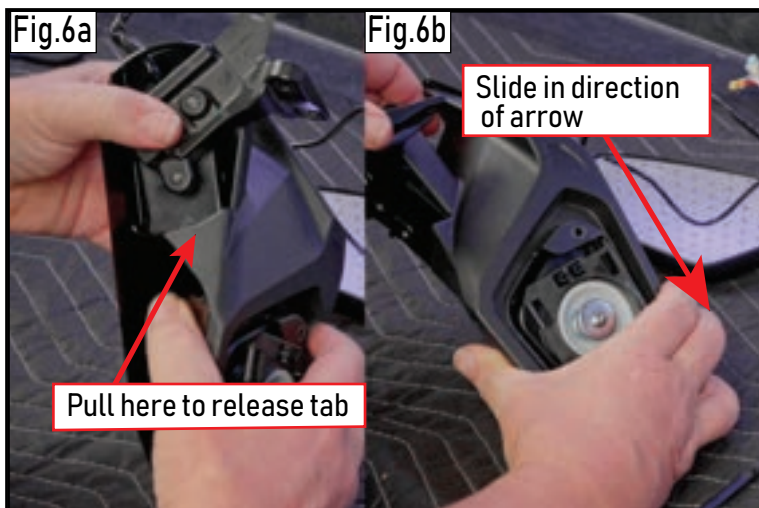
Installation Instructions:

1. Park on a level surface and shut off the motorcycle. Ensure that the engine has time to cool before installation.
2. Remove screw at bottom of mirror. Fig 1a, then pull down on end indicated in Fig. 1b to release cap. Remove the two screws indicated in Fig. 1b and mirror will release.
3. Lift up the tab in Fig. 2 and pull out connector. You can now move the mirror assembly to a protected work surface to continue disassembly.
4. Remove OEM mirror by tilting up at bottom and pull firmly to release mirror from tabs. Fig. 3 Pull the top of mirror out until it stops. Lift disconnected bottom of mirror and pull down to release mirror.
5. Remove the pushpin located near the mounting plate to the motorcycle. Push the center pin and lift pin out. Fig. 4a When reinserting the pin, push the bottom of the pin up as shown in Fig.4b, then insert pin and once cap is fully seated push center pin down until it clicks to lock.
6. Remove the two screws holding the faceplate and set aside. Fig.5
7. Remove faceplate from main housing which is a snap fit holding it together. Pull apart gently from point indicated in Fig. 6a, once it snaps loose slide it across the housing and it will come off. Fig. 6b
8. Loosen but do not remove the two screws indicated in Fig. 7. There just needs to be enough clearance to run the wire underneath this piece and follow the other wire out the housing.
9. Run wire through faceplate and lay wire along channel along bottom indicated in Fig. 9 Lift inner assembly and run wire under and out of slot following other wire. Tighten two screws loosened from Fig.7 and reattach faceplate in reverse order from Fig. 6a and 6b.
10. Wire from the mirror should be in the general position shown in Fig. 10. Before installing mirror pull most of the slack out to the front. Note tabs on mirror, Fig.11 that will go under slots on mirror base. Install at a 45 degree angle and push up till tabs are seated then tilt mirror down and snap tabs on mirror over the bars on the mirror plate Fig. 12 . Reinstall the two faceplate screws



11. Next insert the pins into the provided connector. Align the provided connector as shown in Fig.13. Slide in the wired connector to make sure the wires line up, but do not fully lock it in. The white wire is the ground and should go into the hole aligning with the green wire. The red wire should align with the blue wire. Check the alignment of the pin in Fig. 13, then insert until it clicks and is locked in. Do the same for the other wire making sure the moisture seal is fully inserted. Now connect the provided connector to the existing wired connector.

12. Plug the mirror assembly back into the motorcycle connector and replace the two bolts removed previously. Test the mirror to make sure turn signals are operating normally. Replace cover cap at bottom of mirror assembly by first aligning tabs into slots and pushing up from the bottom and it will snap into place. Replace screw at bottom. Repeat steps 2-12 on other side of motorcycle.



PANOVISTA™ LED LIGHTED EXTENDED CONVEX MIRRORS

