



Goldstrike™ Fork Mounted NAV Lights for Gold Wing

Parts Included:

- 1 Left Side NAV Light Assembly
- 1 Right Side NAV Light Assembly
- 12 Cable Ties
- 1 Dielectric Grease Packet

Installation Instructions:

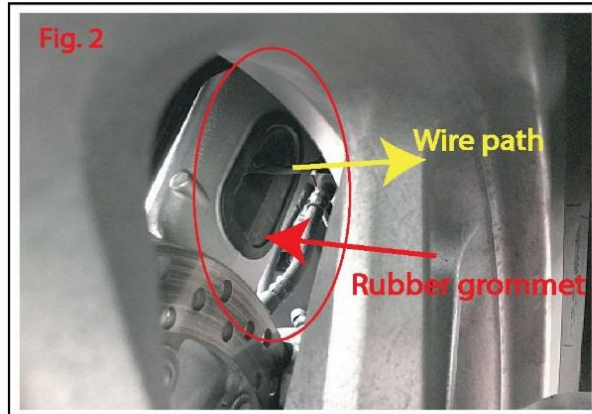
1. Park on a level surface and shut off the motorcycle. Lift motorcycle onto its centerstand if available. Ensure the engine has time to cool before installation.

2. Open the saddlebags and remove side covers by pulling away from the motorcycle with steady pressure.

3. Remove the seat by removing the socket head screws under the front of the seat. Pull up on the front of the seat and slide forward. (Fig. 1)

4. Remove the rubber grommets on the inside of the front fork to gain access to the nut that holds the reflector. (Fig. 2)

5. Use an 8mm socket to remove the nut. **ATTENTION:** It is easy to drop the nut inside the fork leg and difficult to get it out.



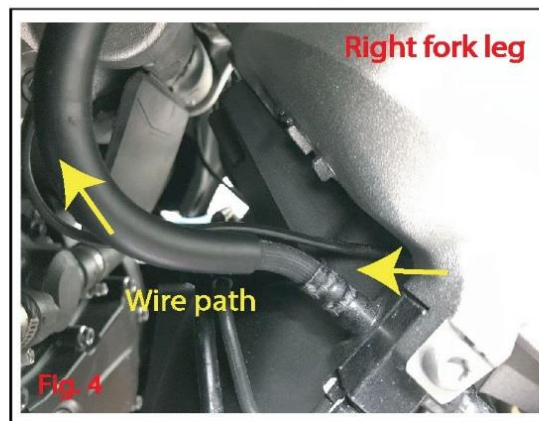
6. Remove the reflector. It may be attached with adhesive tape. Peel it off and clean off any remaining tape from the fork. Clean the mounting surface with an ammonia based glass cleaner to remove any wax or residue.

7. Route the connector and wires through the hole in the fork and test fit the NAV Light.

8. Peel off the adhesive backing and carefully stick the NAV Light into position. Press and hold for 30 seconds.

9. Use an 8mm socket to reinstall the nut. Do not over tighten. **ATTENTION:** It is easy to drop the nut inside the fork leg and difficult to get it out.

10. Use a razor knife to cut a slot into the grommets at the location shown with the white line. (Fig. 3)



WARNING:

This indication alerts you to the fact that ignoring the contents described herein can result in potential serious injury or death if not followed.

CAUTION:

This indication alerts you to the fact that ignoring the contents described herein can or will result in material damage and/or personal injury.

ATTENTION:

This indication alerts you to the fact if you ignore this detail you will affect the performance or functionality of the product.

All Ciro products are designed for "easy assembly" and/or "plug and play". We recommend a competent mechanic install our products, using standard mechanical procedures to assure a safe and successful installation.

NOTE:

Ciro products are designed and manufactured under very strict quality control. Ciro warrants that products sold to the original purchaser shall be free from any defects in materials and workmanship for a period of 3 (three) years from the date of purchase, and a lifetime warranty against LED failure.

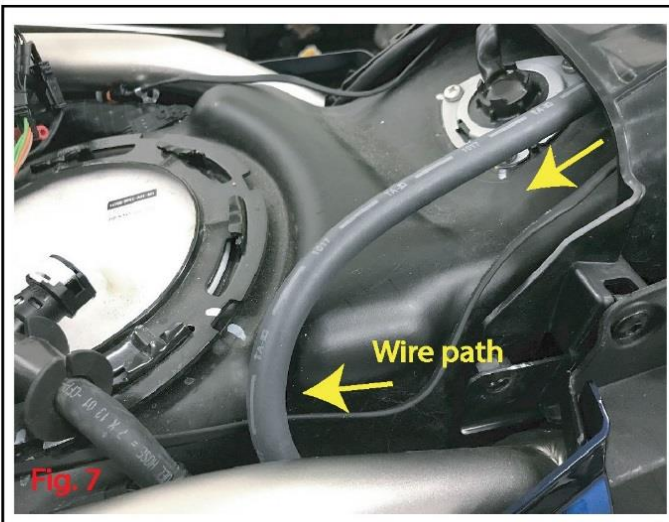
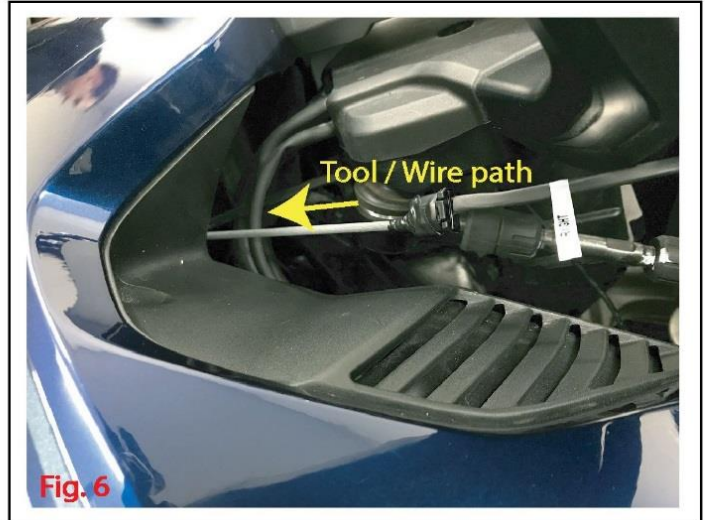
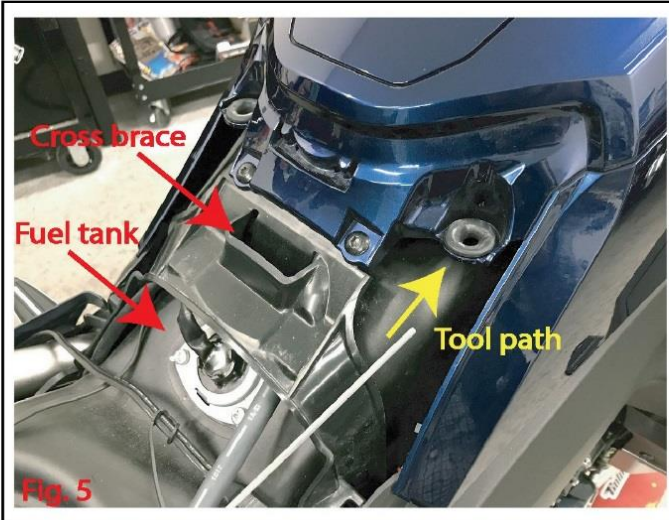
Ciro will have no obligation if the customer cannot show proof of purchase.

Warranty will not be granted unless the part is properly installed and maintained.

Ciro will not be liable for any consequential and incidental damages, including labor, or non-Ciro products.

Please visit our website Ciro3d.com for our complete warranty policy.

11. Push the connector through the slot in the rubber grommet and reinstall the grommet. (Fig. 3)
12. The wire should exit the grommet and point to the rear of the motorcycle. Route the wire in between the fork leg and fender. (Fig. 2)
13. Route the wire in between the fork leg and fender and follow the brake line up into the fairing. (Fig. 4 & 6)



14. Use a stiff wire tool and slide it under the bodywork at the front of the seat into the gap between the fuel tank and bodywork. (Fig. 5)
15. The tool will come out under the handlebar. (Fig. 6) Securely tape the NAV Light connector to the tool and GENTLY pull the connector back through into the under seat area.
16. Tuck the wires under the cross brace and follow the sides of the fuel tank so the wires will not be crushed by the seat. (Fig. 7)
17. Repeat steps 4-16 on the other side of the motorcycle.
18. Plug both connectors into Goldstrike P/N 48000. Test the light for run and turn functions.

19. CAUTION: Starting near the front wheel, secure the NAV Light wire to the brake line with zip ties. Turn the handlebars through full motion left and right and bounce the front suspension up and down. Watch for any interference.
20. Continue securing the wire under the seat. ATTENTION: Carefully test fit the seat and check clearance for new wires and connectors.
21. Reinstall parts removed during installation.